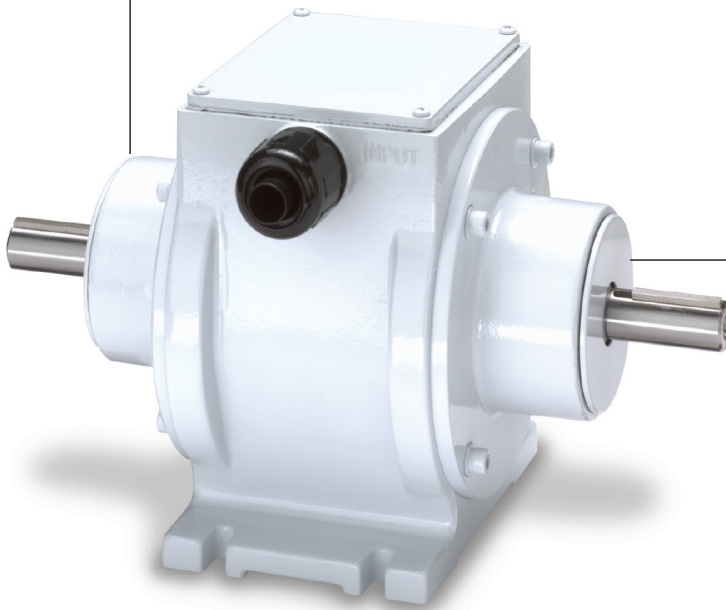




Washdown Electro Pack Clutch/Brakes



Designed for Food Processing Applications

If your clutch/brake application demands consistent, repeatable performance cycle after cycle, through wet and dry conditions, choose Warner Electric's Washdown Electro Pack Clutch/Brakes.

Even in the most demanding environments, Washdown Electro Pack Clutch/Brakes (EP-W) will weather the storm. Designed specifically for use in food, sanitary or any other washdown application, these packaged clutch/brakes are totally enclosed in smooth, completely sealed, rugged enclosures to keep wear particles in and contaminants out.

Washdown Electro Packs are factory aligned, assembled and burnished for consistent out-of-the-box performance.

- USDA Approved Coating
- Smooth Exterior
- Shielded-Sealed Bearings
- Stainless Steel Shafting and Hardware
- Available in 70 and 270 lb-in Static Torque Configurations
- Available in 24 and 90 vdc

For Technical Assistance Call

800-825-9050

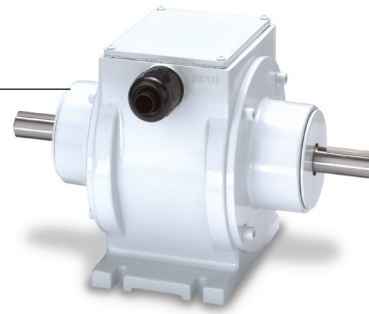
 **Warner**
Electric

An Altra Industrial Motion Company



Washdown Electro Pack Clutch/Brakes

Warner Electric's new Washdown Electro Packs are currently available in two sizes, and in 24 and 90 volt configurations. If your application requires a different voltage or mounting configuration, please contact Warner Electric for assistance.



Model	Voltage (DC)	Max RPM	Static Torque (lb-in)	Part Number
EP-250-W	24	7500	70	5130-273-060
	90			5130-273-061
EP-400-W	24	4500	270	5131-273-030
	90			5131-273-031

Washdown Enclosed UniModule Clutch/Brakes

For washdown applications requiring more torque than the EP-W's provide and/or motor mounting, Warner Electric offers the Washdown Enclosed UniModules Series. These units are available in a wide range of sizes, voltages and mounting configurations as outlined below.



Washdown EUM-W	Voltage (DC)	Max RPM	Static Torque (lb-ft)	NEMA Frame	Part Number
1020 Configuration					
EUM-50-1020W	6	3600	16	56C/48Y	5370-273-100
	24				5370-273-101
	90				5370-273-099
EUM-100-1020W	6	3600	30	56C/48Y	5370-273-108
	24				5370-273-109
	90				5370-273-107
EUM-180-1020W	6	3600	30	182C/143TC 184C/145TC	5370-273-116
	24				5370-273-117
	90				5370-273-115
EUM-210-1020W	6	3600	95	213C/182TC 215C/184TC	5371-273-056
	24				5371-273-057
	90				5371-273-055
EUM-215-1020W	6	3600	95	213TC/215TC	5371-273-086
	24				5371-273-087
	90				5371-273-088
2030 Configuration					
EUM-50-2030W	6	3600	16	56C/48Y	5370-273-104
	24				5370-273-105
	90				5370-273-103
EUM-180-2030W	6	3600	30	182C/143TC 184C/145TC	5370-273-120
	24				5370-273-121
	90				5370-273-119
EUM-210-2030W	6	3600	95	213C/182TC 215C/184TC	5371-273-060
	24				5371-273-061
	90				5371-273-059



Warner Electric
 449 Gardner Street • South Beloit, IL 61080
 815-389-3771 • Fax: 815-389-2582
 www.warnerelectric.com
 An Altra Industrial Motion Company
 P-1549-WE 12/07 Printed in USA